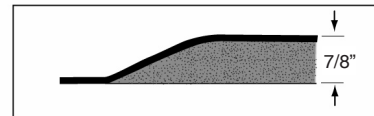


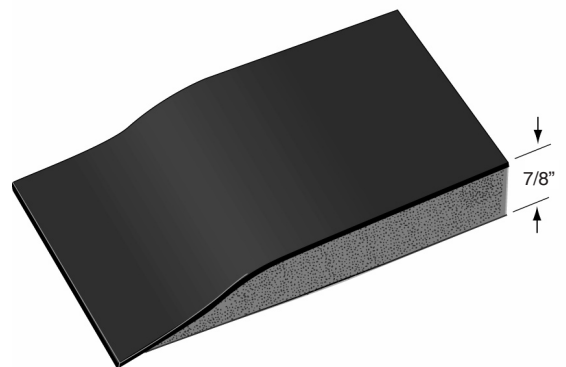


XTRA-FLEX™ SALON MATS

- The elastic properties of Xtra-Flex foam in combination with the Performance Rated Polymeric top surface give the Xtra-Flex Salon mat a buoyancy and bounce that resemble the natural springiness of walking on a fresh mowed lawn.
- Every foot movement on an Xtra-Flex mat is absorbed by the Xtra-Flex Microcellular Foam base to reduce any impact effects. It springs back to deliver that small amount of energy back to the feet and provides a vitality that stimulates good circulation, the essence of a healthful life.
- The Xtra-Flex rebound properties and resiliency are backed by a five year performance guarantee.
- Xtra-Flex anti-fatigue mats are a full 7/8" thick, double the thickness of ordinary mats.



XTRA-FLEX™ Salon Mats			
Stock No.	Style	Size	Weight 7/8"
XF-2436	Shampoo Mat	2' x 3'	12.0 lbs. ea.
XFS-3648R	Rectangle	3' x 4'	20.0 lbs. ea.
XFS-3648S	Semi-Circle	3' x 4'	21.0 lbs. ea.
XFS-3660R	Rectangle	3' x 5'	26.0 lbs. ea.
XFS-3660S	Semi-Circle	3' x 5'	25.0 lbs. ea.
XFS-4860R	Rectangle	4' x 5'	31.0 lbs. ea.
XFS-4860S	Semi-Circle	4' x 5'	30.0 lbs. ea.
XFS-6060R	Rectangle	5' x 5'	37.0 lbs. ea.
XFS-6060S	Semi-Circle	5' x 5'	36.0 lbs. ea.
CUSTOM SIZES – AVAILABLE IN LENGTHS UP TO 75 LN. FT.			
Stock No.	Style		Weight 7/8"
XFS-36	36" W w/cut outs		4.4 lbs./Ln. Ft.
XFS-48	48" W w/cut outs		5.5 lbs./Ln. Ft.
XFS-60	60" W w/cut outs		7.5 lbs./Ln. Ft.



Color: Black Only. 7/8" Thick.