



**2011 USA COUTURE SALON REWARDS PROGRAM**

**ALFAPARF  
MILANO**

[WWW.ALFAPARFEDUC.COM](http://WWW.ALFAPARFEDUC.COM) / 1-877-722-6567



# ALFAPARF MILANO COUTURE SALON REWARDS PROGRAM

WELCOME TO THE EXCLUSIVE **ALFAPARF MILANO** COUTURE SALON REWARDS PROGRAM

If you are joining us as a new member, congratulations for choosing the most exclusive salon rewards program. It is a simple program, the more Alfaparf products you purchase, the more rewards you are eligible to receive.

The Couture Salon Rewards Program is designed to support salons that have a vision to grow. The Alfaparf Rewards program can be customized to fit the needs of your salon, you may need specific education, back bar products, specific styling products or whatever the need, this program will help you grow.



## Salon Rewards:

- Alfaparf Milano Back Bar Items
- Alfaparf Milano Station Items for Styling
- Salon Support Items
- Alfaparf Special Events\*

## Salon Qualifications:

- Purchase a minimum of \$500 per month in Alfaparf Products (a mix of color and retail products)
- Represent Alfaparf color and at least 2 retail lines
- Use Alfaparf on the back bar area and as station products
- Be in good standing with ALFAPARF/Alfaparf distributor
- Complete the Alfaparf Milano Couture Salon Rewards Enrollment form
- Rewards are redeemed on a quarterly basis and must be submitted within 30 days of each quarter end

## Couture Rewards Levels

LEVELS	QUARTERLY PURCHASE RANGE	MINIMUM AVERAGE MONTHLY PURCHASE	% OF TOTAL QUARTER AMOUNT APPLIED TOWARDS ALFAPARF REWARDS PROGRAM
Level 1	\$1,500 - \$2,999	\$500	5%
Level 2	\$3,000 - \$5,999	\$1,000	7%
Level 3	\$6,000 - \$7,499	\$2,000	10%

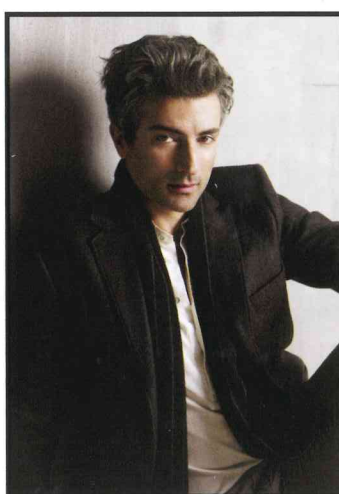
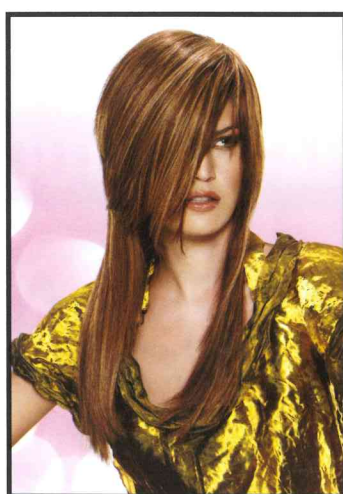
\* Must purchase a minimum of \$30,000 annually to qualify.  
Purchase requirement are based as net purchase.

# HOW TO REDEEM FOR REWARDS

## Redemption Steps

- Initial step: you must sign up and qualify for the Alfaparf Milano Couture Salon Rewards Program.
- Fill out the Alfaparf Milano Couture Salon Redemption form (*Rewards are based on the % you will receive back based on your monthly purchase level*).
- All forms go directly to your Alfaparf Sales Representative. The redemption form should be given to your Alfaparf Sales Representative at the end of each quarter. (*Redemption is based on a quarterly purchase*)

## SALON SUPPORT ITEMS INCLUDE (examples only)



ALFAPARF LARGE FABRIC IMAGES TO HANG IN SALON