

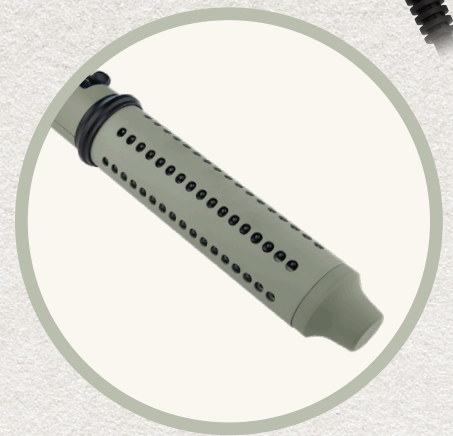
# STYLECRAFT®

## SAGE™ COLLECTION

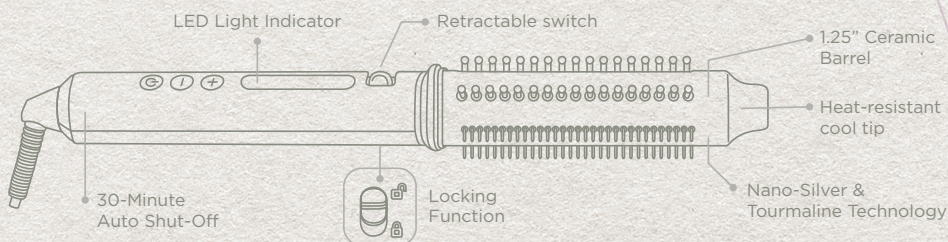
### RETRACTABLE STYLING BRUSH & CURLING WAND STYLE WITH WISDOM. SHINE WITH CONFIDENCE.



- **Premium Ceramic Barrel**  
1.25" Diameter barrel infused with Keratin, Argan, and Coconut oils for ultimate smoothness and shine.
- **Advanced Nano-Silver & Tourmaline Technology**  
Releases negative ions to seal cuticles, lock in moisture, reduce frizz, and enhance natural shine for healthier, hydrated hair.
- **Fast & Even Heating**  
MCH (metal ceramic heat) technology ensures quick heat-up and even distribution for efficient, long-lasting results.
- **Customizable Temperature**  
5 adjustable settings with LED indicators (300°F to 410°F) to suit all hair types.
- **Smooth Styling Experience**  
Retractable switch releases hair instantly without pulling or snagging, ensuring perfect curls.



**Easy Release  
Retractable Bristles**



TEMPERATURE  
300°F - 410°F

